

# STRATEGIC INTENT 2020-2030

## Wetlands International Philippines

### Safeguarding and restoring wetlands for people and nature

Wetlands International envisions a world where wetlands are treasured and nurtured for their beauty, the life they support, and the resources they provide.

We aim to inspire and mobilize a wide range of actors and stewards to upscale action to transform whole landscapes, seascapes, and sectors.

Wetlands International supports and promotes science-based innovations and approaches, and partners with national to local government to provide technical guidance on restoration and Nature-based Solutions.

We seek to influence policy and investment by mainstreaming wetland concerns and solutions in public and private sector agenda to meaningfully incorporate these into conservation, climate action, and development programs.

Wetlands International works in Rivers and Lakes, Peatlands, and Deltas and Coasts to achieve three impacts of Healthy Wetlands, Resilient Communities, and Reduced Climate Risks.

### Mobilizing action for healthy and resilient Philippine wetlands

In the Philippines, Wetlands International, registered as Latian Internasyonal Pilipinas Inc., works with national and local partners to facilitate and implement impactful projects and programs for wetland restoration and management.

#### **We advance the goal of sustainable and wise use of wetlands by:**

- Demonstrating and promoting science-based restoration approaches and best practices;
- Supporting and implementing scientific and technical research on wetland ecology and ecosystem services to inform conservation and management decisions;
- Providing technical support on Nature-based Solutions to achieve multiple benefits including flood risk reduction (Building with Nature), climate change adaptation and mitigation, and biodiversity conservation;
- Working with the Philippine Government and partners to create an enabling policy environment for wetland restoration and sustainable management;
- Facilitating responsible partnerships with the private and business sectors to unlock long-term, sustainable financing for wetland stewardship;
- Communicating the value of wetlands and their conservation to multiple audiences, from legislators and decision-makers, investors and potential donors, to local communities and the general public; and
- Enabling the exchange of new science, best practices, and other information relevant to the conservation and wise use of wetlands through conferences (e.g., Asian Wetlands Symposium in November 2024; national conference on wetlands in early 2025, in view of developing it as a regular activity), forums, and training and other capacity-building among stakeholders.

# RIVERS & LAKES

## Reducing flood risk through Integrated River Basin Management

By 2030, we aim to:

- 1 Safeguard 150,000 ha of high-value river wetlands in at least four major river basins;
- 2 Safeguard and restore 20,000 ha of wetlands as integral elements of productive river and lake landscapes; and
- 3 Influence investment worth 4 million euros to enable nature-based solutions in freshwater wetlands for climate change adaptation and mitigation.

Wetlands International Philippines has extensive technical and practical experience in Integrated River Basin Management, with past and ongoing work in the Agusan River Basin and Cagayan de Oro River Basin. Our work has involved demonstrating rainforestation in selected sites, enhancing partnerships among multiple sectors for coordinated river basin management, and developing tools and technologies for decision-making.

We aim to continue our existing work while developing programs in other major river basins in the Philippines such as the Pampanga River Basin in Luzon and the Mindanao River Basin.

# PEATLANDS

## Working with communities for sustainable agriculture in peatlands

By 2030, we aim to:

- 1 Safeguard 6,000 ha of high-value peatlands;
- 2 Enable community-based conservation and restoration in 3,000 ha of peatlands; and
- 3 Reduce the impact of peat-based industries, e.g., land conversion for rice agriculture and palm oil plantations, in 3,000 ha of peatland

Wetlands International Philippines has been developing its peatland program, aiming to restore ecological health in the peatlands of the country in Agusan Marsh, Leyte Sab-a Basin, and Liguasan Marsh.

Our key strategies:

- Support scientific and technical research on peatland hydrology and ecology to guide restoration and management;
- Pilot and document innovative peatland restoration integrated with sustainable land use;
- Provide technical assistance and build capacity on peatland restoration; facilitate and participate in partnership strengthening planning for peatland use, and fire prevention and management;
- Contribute to the development of enabling mechanisms for regular research and monitoring; and
- Advance policy that will sustain peatland management in the Philippines.

# DELTA & COASTS

## Scaling up best practices for mangrove and coastal wetland restoration

By 2030, we aim to:

- 1** Safeguard 50,000 ha of high-value coastal wetlands including critical habitats such as Key Biodiversity Areas and Important Waterbird Areas;
- 2** Integrate wetlands into 10,000 ha of coastal production systems; and
- 3** Influence investment worth 5 million Euros in coastal infrastructure.

These targets will be achieved through a combination of direct implementation, and mobilization of multiple actors for upscaling.

We will continue our work in the north coast of Manila Bay, and develop programs for other seascapes characterized by wetland habitats that have exceptional ecological and ecosystem service value but are threatened and highly vulnerable to climate and environmental change (e.g., Bicol, Eastern Visayas, Zamboanga Peninsula, and Caraga).

Our approach is guided by Ecological Mangrove Restoration (EMR), which prioritizes the recovery of environmental conditions conducive for natural regeneration rather than relying solely on planting.

To inspire and enable coastal wetland conservation and restoration at scale, these are our strategies:

- Demonstrate and promote EMR, other science-based approaches, and best practices;
- Develop landscape plans for mangrove conservation and restoration;
- Expand protection to other coastal wetlands such as intertidal mudflats and seagrass beds;
- Restore and protect habitats for carbon sequestration (Blue Carbon);
- Support the sustainable use of coastal and marine ecosystems (Blue Economy); undertake research; and
- Provide technical support and build capacity.

In advocacy and communications, we aim to influence policy that can support scaling up of coastal wetland conservation and management, and to develop and implement Communications, Capacity-building, Education, and Public Awareness (CEPA) campaigns for multiple audiences.

We will harness financing opportunities by building linkages between coastal wetland stakeholders and public and private investors, and promoting innovative funding such as Payment for Ecosystem Services, to secure long-term stewardship of conservation and restoration initiatives.

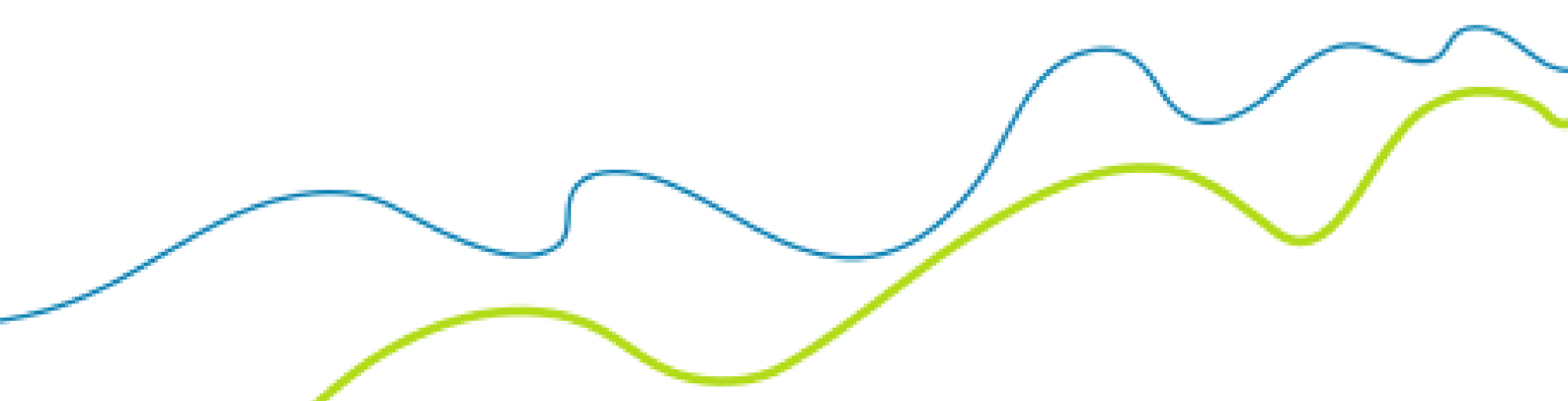
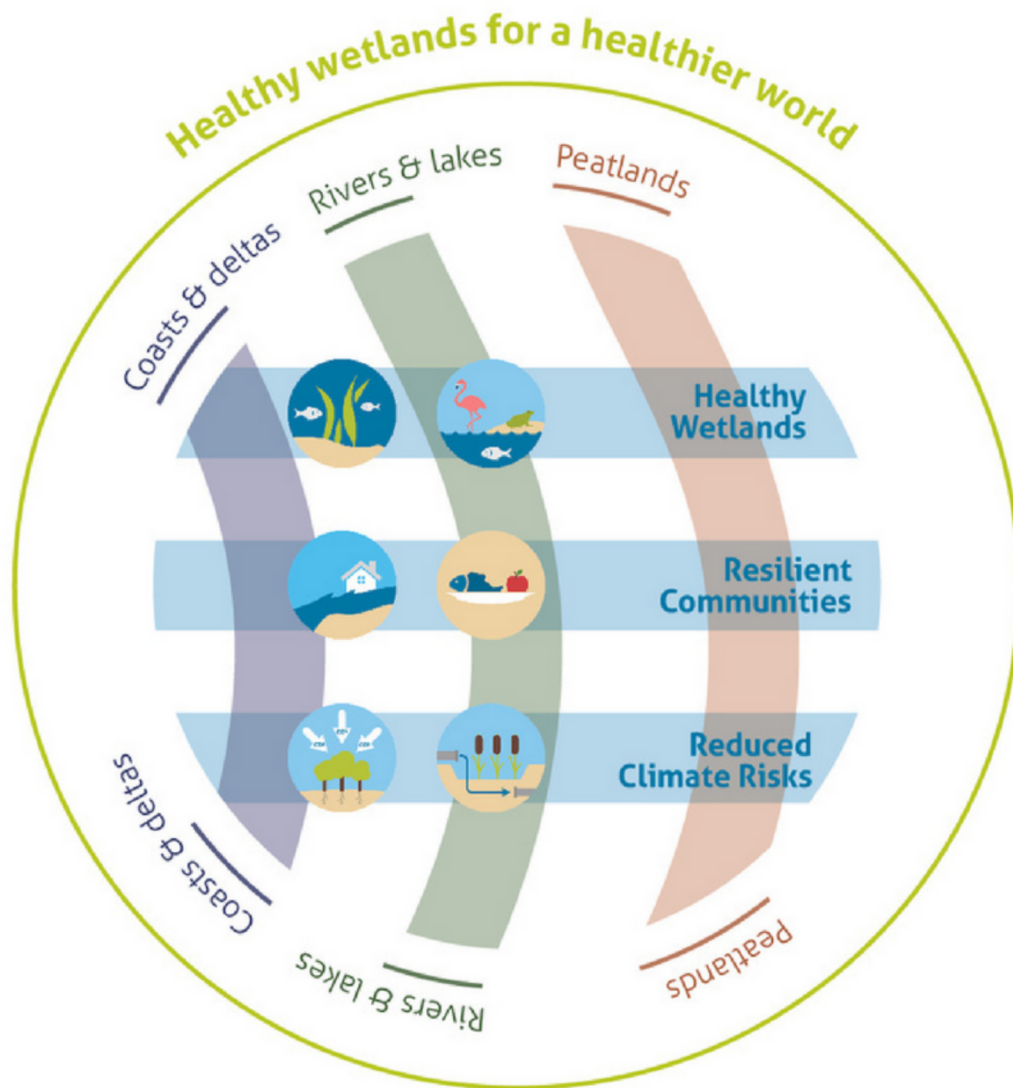




Figure: Wetlands International Strategic Framework



**Learn how to partner with us**

- +632 8 5641562
- +63917 628 2691
- latian.wiphils@wetlands.org
- philippines.wetlands.org
- <https://www.facebook.com/WetlandsInternationalPh/>
- <https://ph.linkedin.com/in/wetlands-international-philippines>

